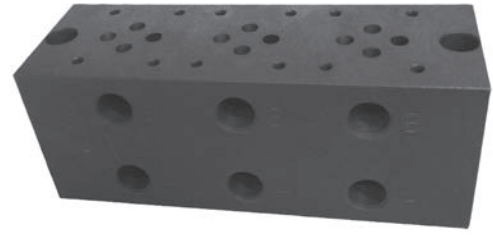


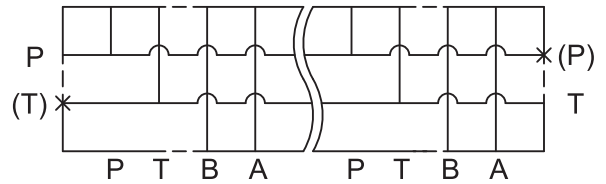
型號說明 HOW TO ORDER

M - 02 - 5E - 1 - B
① ② ③ ④ ⑤

- ① 閥系列 Valve Series
M = 油路板 Manifold
- ② 通稱口徑 Subplate Mounting Size
02 = 通稱 Nominal 1/4" (6mm)
- ③ 閥聯數 No. Of Station
1E = 1 聯 1 Station 2E = 2 聯 2 Station
3E = 3 聯 3 Station 4E = 4 聯 4 Station
5E = 5 聯 5 Station 6E = 6 聯 6 Station
- ④ 配管尺寸 Piping Threads
1 = PT 螺紋
2 = NPT 螺紋
- ⑤ AB 孔位置 AB Port Position
A = A 孔向上 Upward
B = B 孔向上 Upward



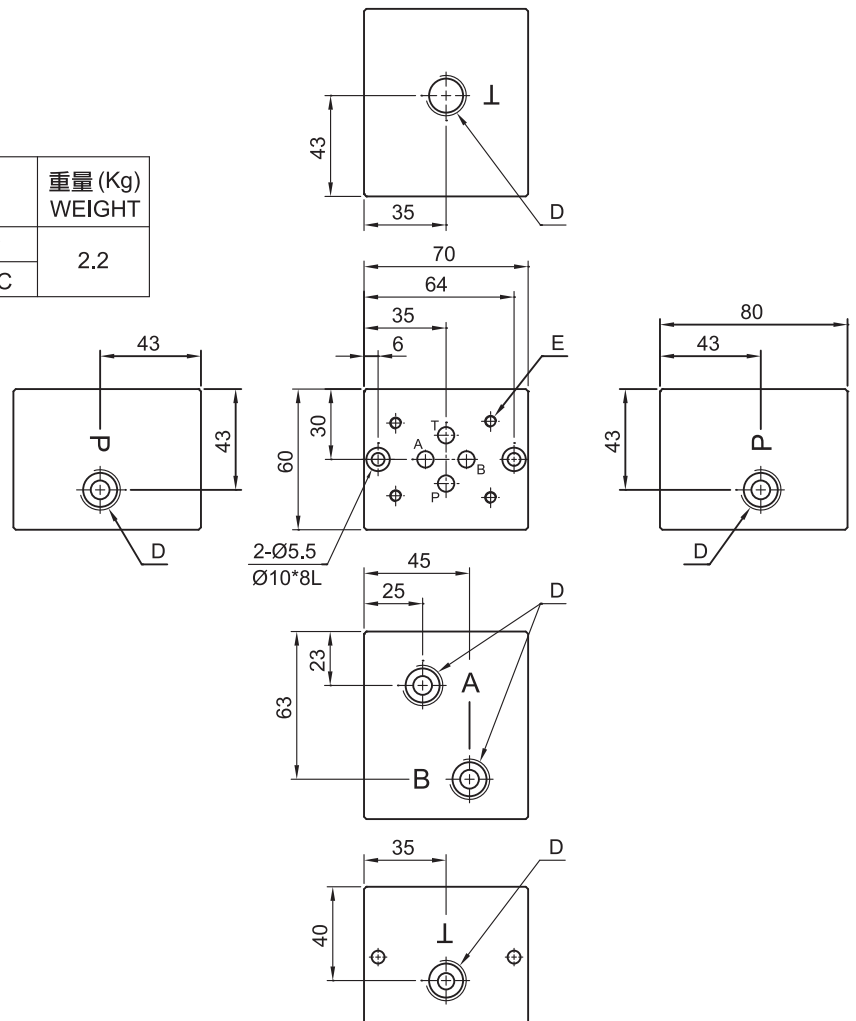
迴路符號 SYMBOLS



安裝尺寸 DIMENSIONS

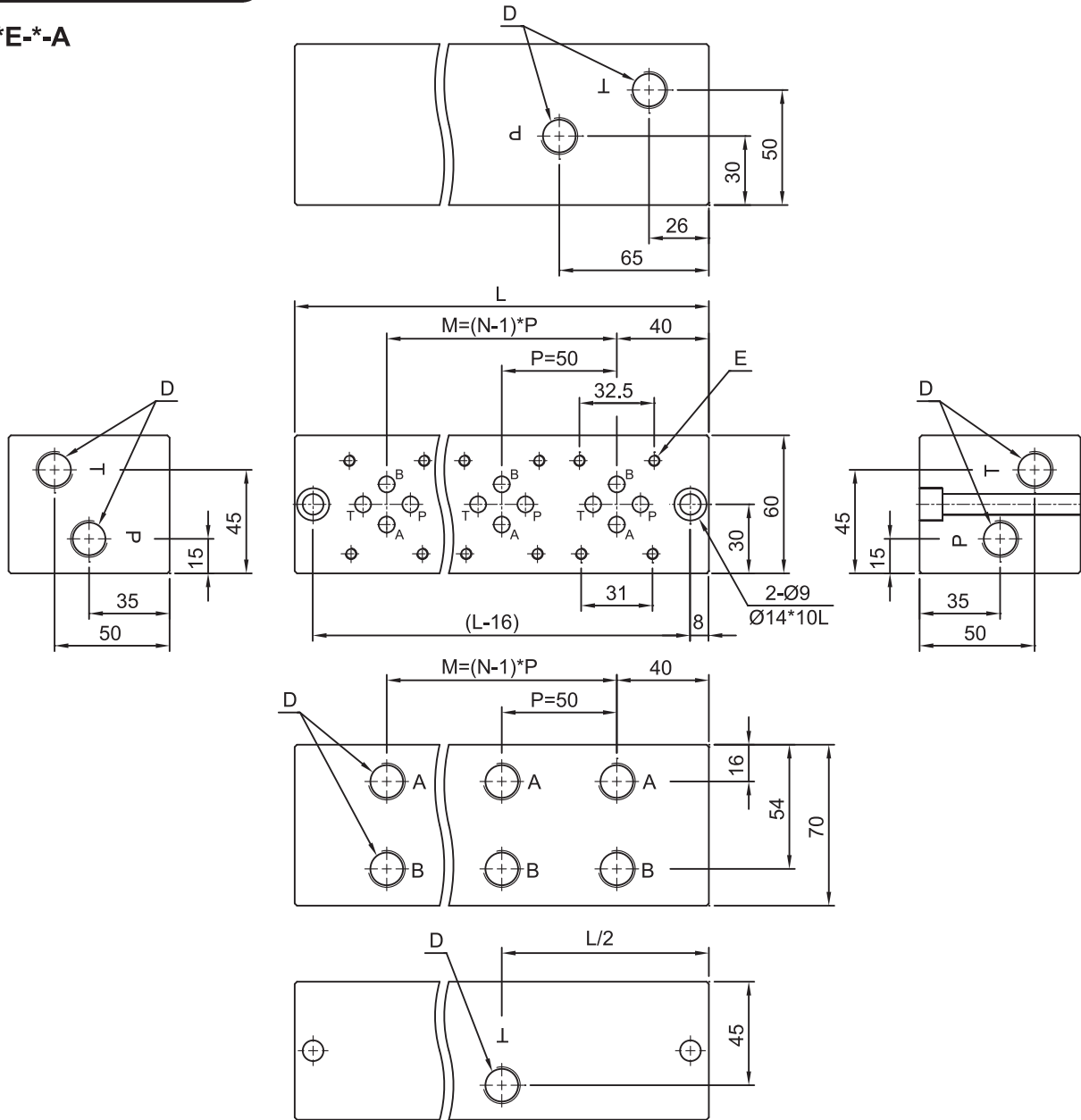
M02-1E

型式號碼 Model	配管尺寸 PIPING THREADS	D	E	重量 (Kg) WEIGHT
M02-1E	1	PT3/8"	M5*0.8P	2.2
	2	NPT3/8"	#10-24UNC	



安裝尺寸 DIMENSIONS

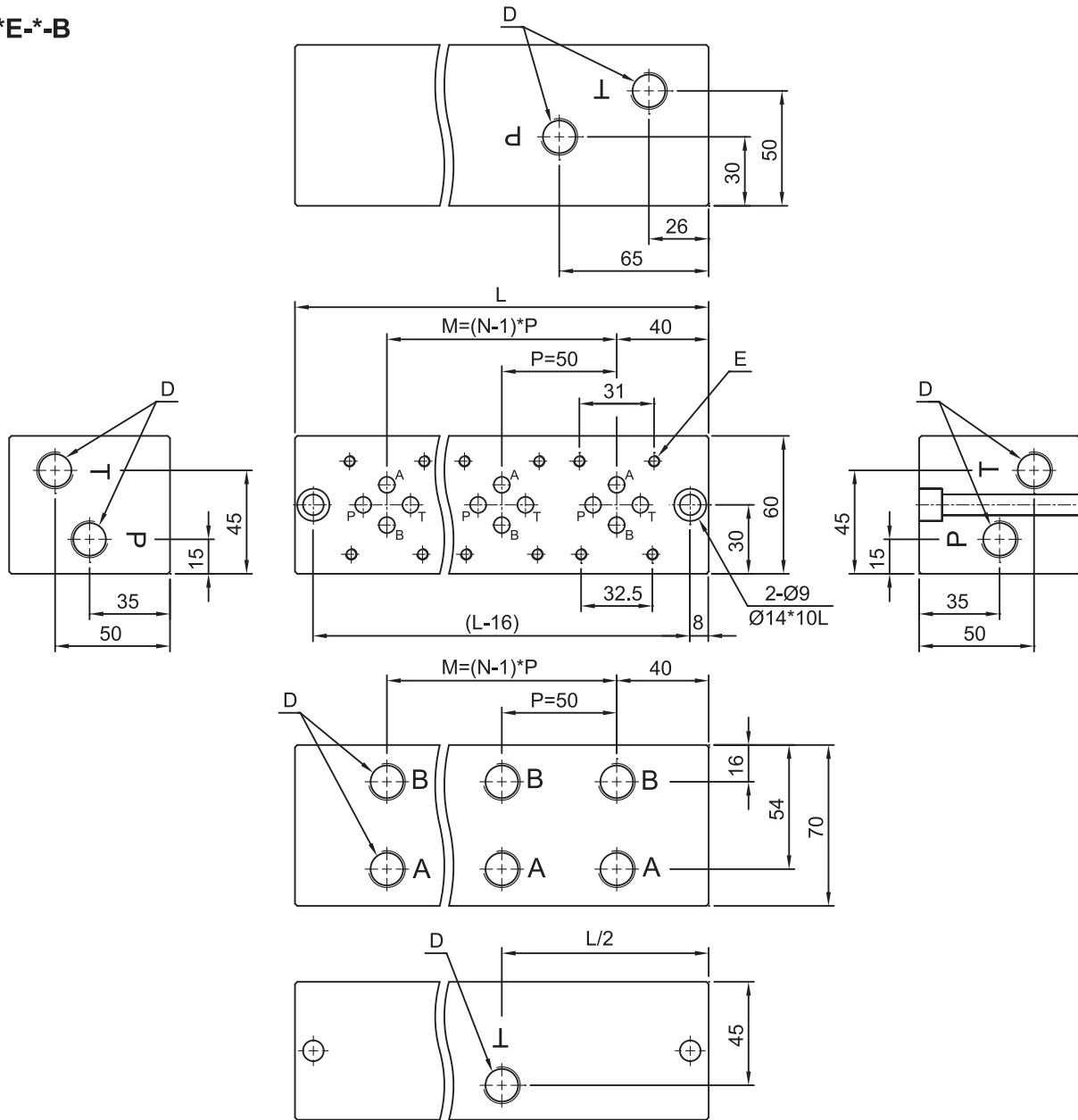
M02-*E*-A



型式號碼 Model	配管尺寸 PIPING THREADS	D	E	N	M	L	重量 (kg) WEIGHT
M02-2E	1	PT3/8"	M5 × 0.8P	2	50	130	3.2
	2	NPT3/8"	#10-24UNC				
M02-3E	1	PT3/8"	M5 × 0.8P	3	100	180	4.5
	2	NPT3/8"	#10-24UNC				
M02-4E	1	PT3/8"	M5 × 0.8P	4	150	230	5.8
	2	NPT3/8"	#10-24UNC				
M02-5E	1	PT3/8"	M5 × 0.8P	5	200	280	7.2
	2	NPT3/8"	#10-24UNC				
M02-6E	1	PT3/8"	M5 × 0.8P	6	250	330	8.7
	2	NPT3/8"	#10-24UNC				

安裝尺寸 DIMENSIONS

M02-*E-*-B



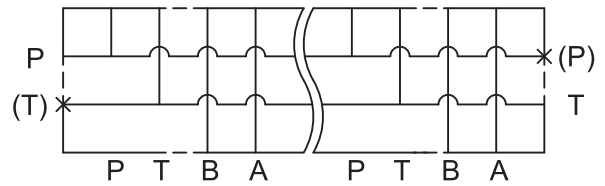
型式號碼 Model	配管尺寸 PIPING THREADS	D	E	N	M	L	重量 (kg) WEIGHT
M02-2E	1	PT3/8"	M5 × 0.8P	2	50	130	3.2
	2	NPT3/8"	#10-24UNC				
M02-3E	1	PT3/8"	M5 × 0.8P	3	100	180	4.5
	2	NPT3/8"	#10-24UNC				
M02-4E	1	PT3/8"	M5 × 0.8P	4	150	230	5.8
	2	NPT3/8"	#10-24UNC				
M02-5E	1	PT3/8"	M5 × 0.8P	5	200	280	7.2
	2	NPT3/8"	#10-24UNC				
M02-6E	1	PT3/8"	M5 × 0.8P	6	250	330	8.7
	2	NPT3/8"	#10-24UNC				

型號說明 HOW TO ORDER

M - 03 - 5E - 1
 ① ② ③ ④

- ① 閥系列 Valve Series
 M = 油路板 Manifold
- ② 通稱口徑 Subplate Mounting Size
 03 = 通稱 Nominal 3/8 (9mm)
- ③ 閥聯數 No. Of Station
 1E = 1 聯 1 Station 2E = 2 聯 2 Station
 3E = 3 聯 3 Station 4E = 4 聯 4 Station
 5E = 5 聯 5 Station 6E = 6 聯 6 Station
- ④ 配管尺寸 Piping Threads
 1 = PT 螺紋
 2 = NPT 螺紋

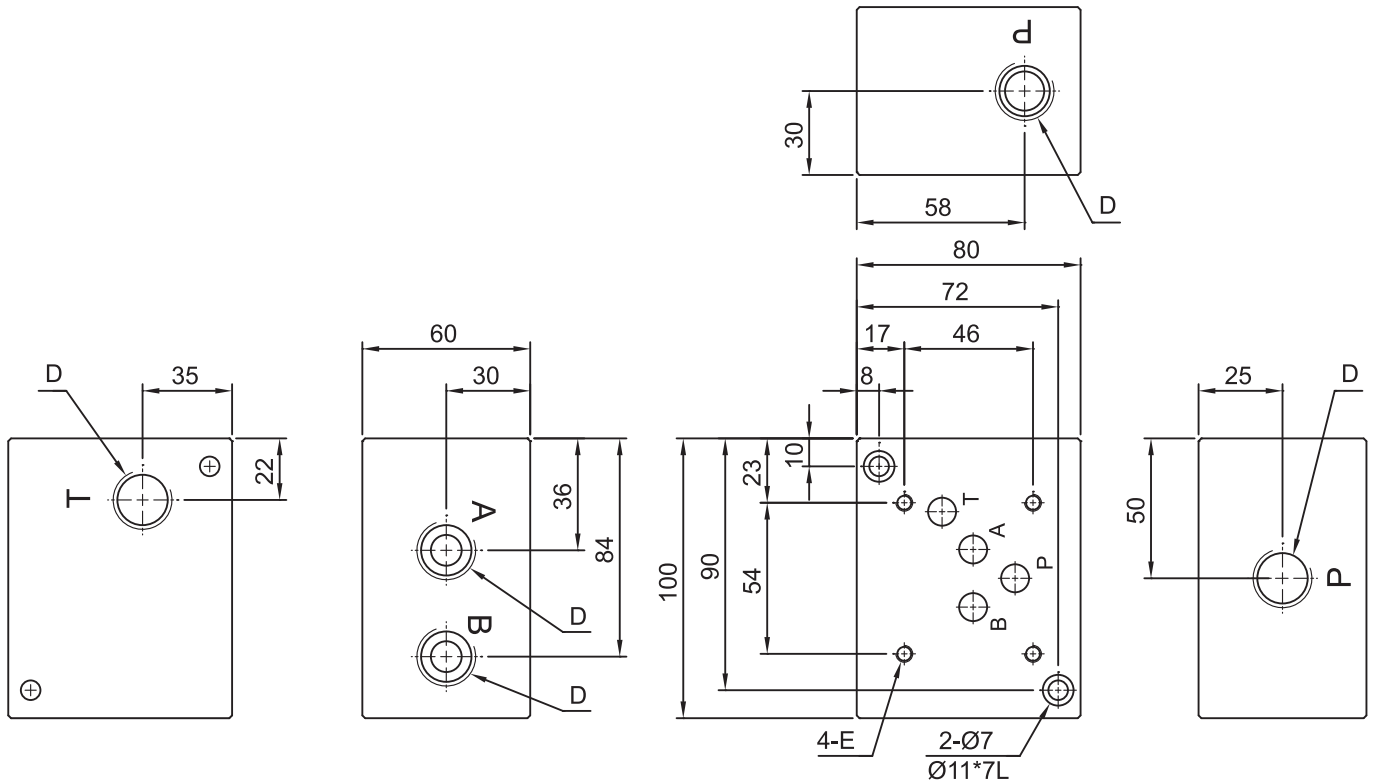
迴路符號 SYMBOLS



安裝尺寸 DIMENSIONS

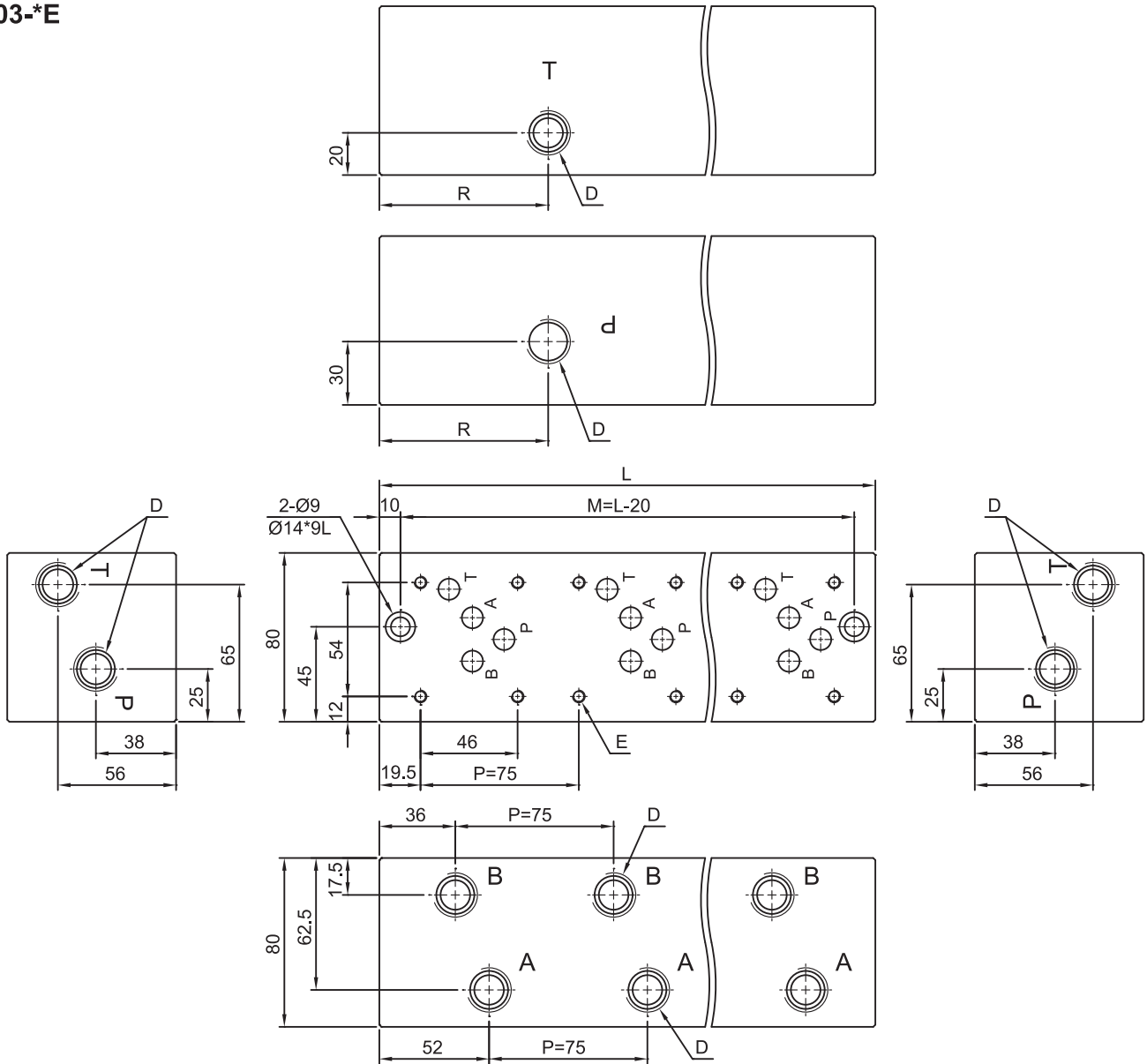
M03-1E

型式號碼 Model	配管尺寸 PIPING THREADS	D	E	重量 (Kg) WEIGHT
M03-1E	1	PT1/2"	M6*1.0P	3.2
	2	NPT1/2"	1/4-20UNC	



安裝尺寸 DIMENSIONS

M03-*E



型式號碼 Model	配管尺寸 PIPING THREADS	D	E	N	R	M	L	重量 (kg) WEIGHT
M03-2E	1	PT1/2"	M6 × 1.0P	2	80	140	160	6.9
	2	NPT1/2"	1/4-20UNC					
M03-3E	1	PT1/2"	M6 × 1.0P	3	80	215	235	10.2
	2	NPT1/2"	1/4-20UNC					
M03-4E	1	PT1/2"	M6 × 1.0P	4	155	290	310	13.6
	2	NPT1/2"	1/4-20UNC					
M03-5E	1	PT1/2"	M6 × 1.0P	5	155	365	385	16.7
	2	NPT1/2"	1/4-20UNC					
M03-6E	1	PT1/2"	M6 × 1.0P	6	230	440	460	20.0
	2	NPT1/2"	1/4-20UNC					